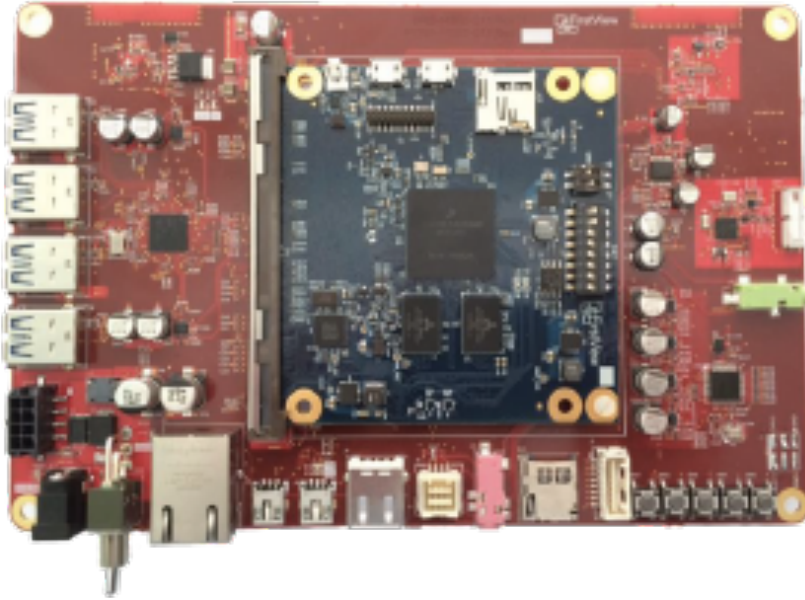


## System on Module Carrier Board



### High Level Specifications:

- FirstView SOM Interface
- 10 to 24VDC Supply Voltage
- Bluetooth, WiFi, and GPS
- USB 2.0 Host x1, 3.0 Host x 4, OTG x1
- 10/100/1000 Ethernet
- Analog Camera Interface
- LCD Interface with Touchscreen
- CAN Interface
- Console Debug Port (USB)
- User Defined Switches
- Audio Out and Microphone In
- 5 x 7.6 inches (127 x 193 mm)

## System on Module Carrier Board

The FirstView SOM Carrier Board is a companion board to the FirstView SOM designed to speed up development of hardware and software. The carrier allows the developer to test multiple peripherals with network connectivity and user interfaces.

## Applications

### • Consumer



- Application software development
- Rapid Product Showcase
- Automotive Infotainment

### • Industrial



- Outdoor/Indoor digital video signage
- Human Machine Interface (HMI)

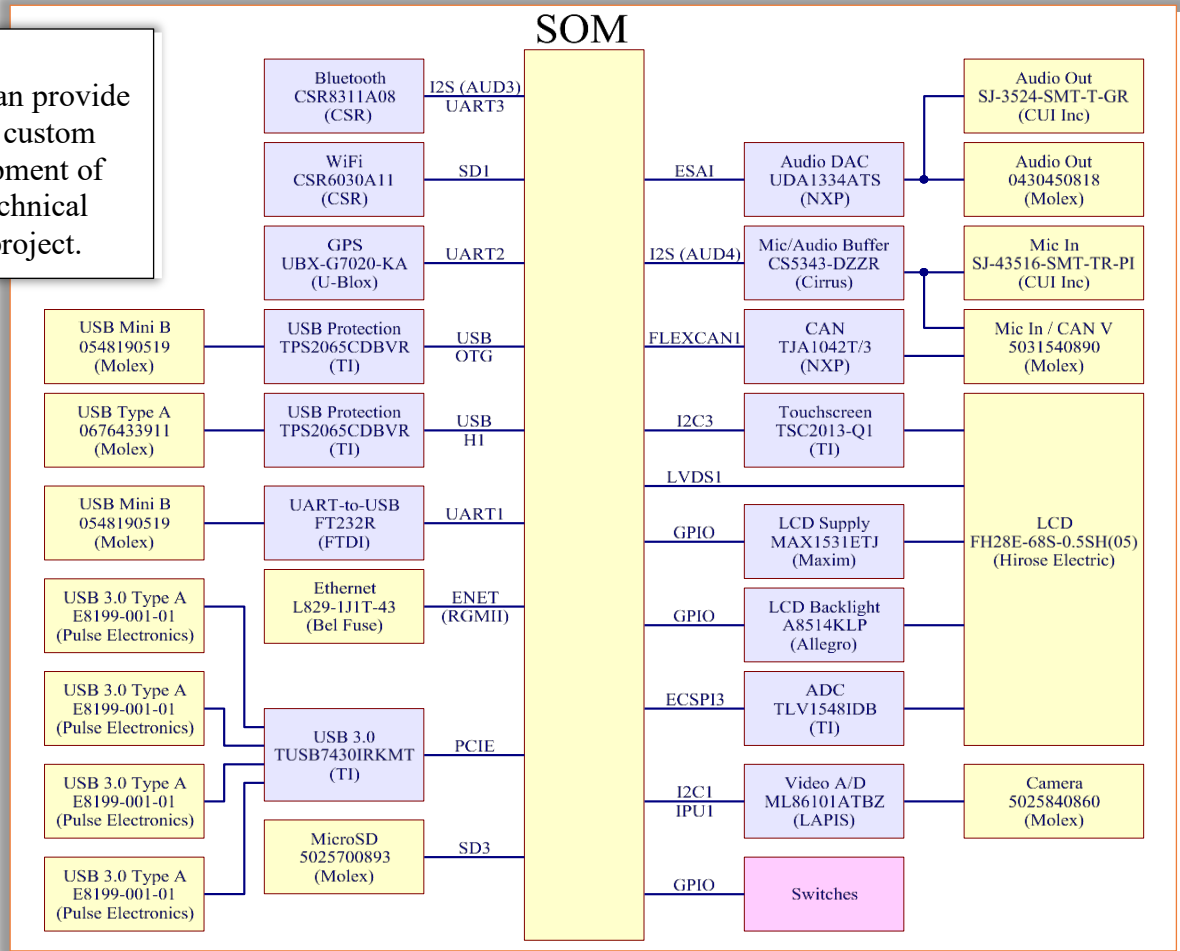
### • Automotive



# System on Module Carrier Board

## Block Diagram:

**Services**  
 FirstView Consultants can provide full software support, custom modifications, development of carrier boards, and technical consulting for your project.



### Additional Features

- Provides all necessary connections for Bluetooth (CSR8311A08), WiFi (CSR6030), and GPS (UBX-G7020) including on board ceramic antennas for each IC
- Has a UART to USB converter for the i.MX6 debug console port
- The board has a 4 port USB 3.0 chip (TUSB7430) and all necessary components
- The board supports an LCD, via LVDS, with resistance touch screen. All necessary backlight and LCD gamma voltages are generated
- A NXP UDA1334ATS provides an audio out option. The electronics can directly drive headphones or can be used as an input to power speakers